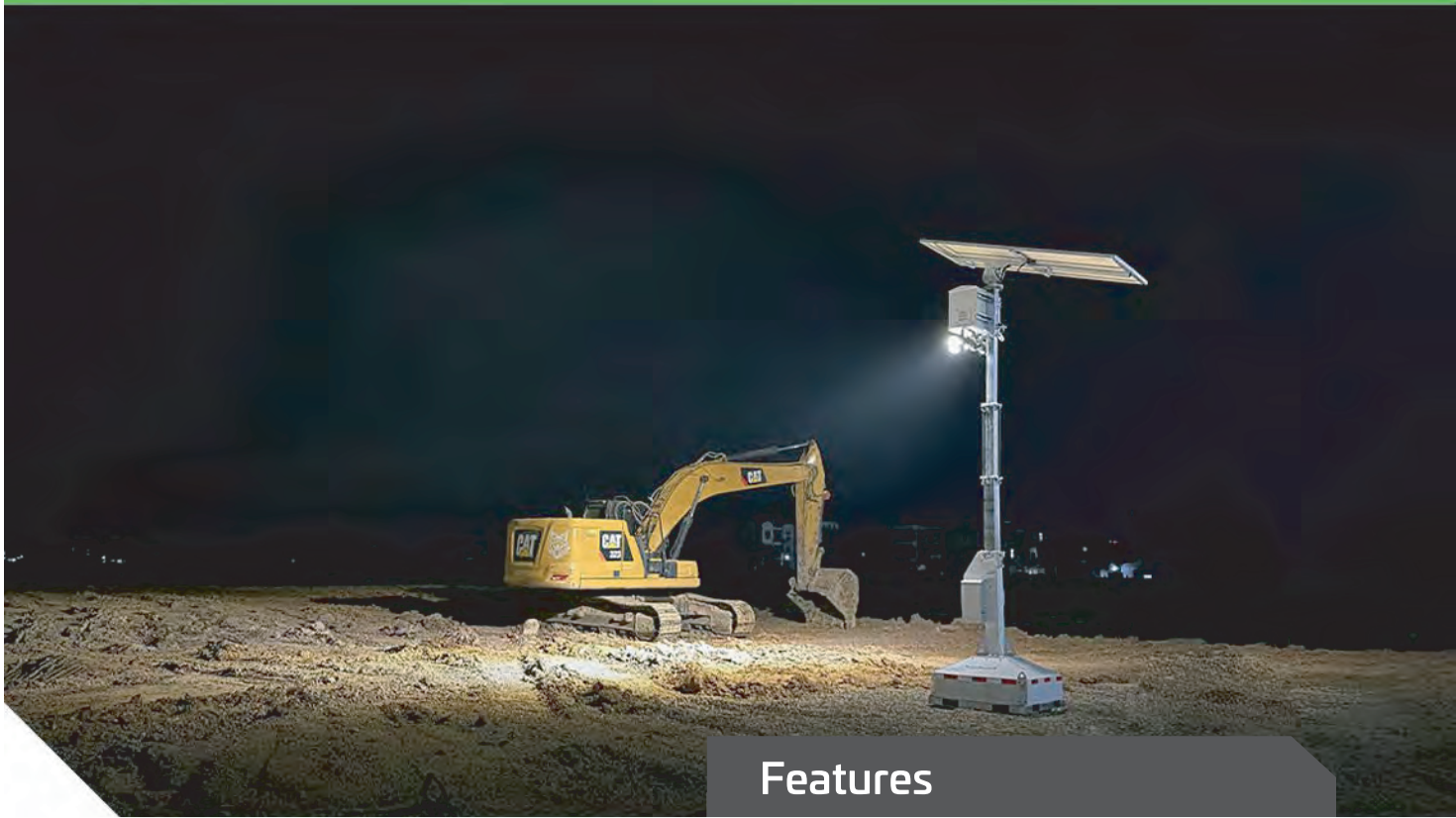


SLD RELOCATABLE LIGHTING TOWER



Features

The SLD Relocatable Solar Lighting Tower is ideal for temporary or semi-permanent illumination of car parks, construction sites, mining camps, events, and roadworks. Forklift tyne access points and a height adjustable telescopic tower ensure ease of transport and minimal setup time on site.

A premium 200 Amp Hour LiFePO4 battery combined with the light output achieved by the 160 lumen/watt pivoting LED's deliver superior dusk to dawn lighting. The exceptional 19200 lumen output is dimmable in 25% increments further increasing the autonomy. The 435w solar panel solar panel can be rotated 360 degrees horizontally and 90 degrees vertically ensuring maximum photovoltaic conversion and minimum recharge time. Bird spikes are a standard feature.



| | |
|------------------|----------|
| Luminaire Height | Up To 4m |
| Lumen Output | 19200 lm |
| LED Output | 2 x 60w |

Over 1000 Sqm of illumination (at 1 lux)

Easily transported and relocated

Minimal set up time on site

Constant output lighting (no PIR)

Ideal for temporary or semi-permanent illumination

160 lumen per watt

Dimmable in 25% increments

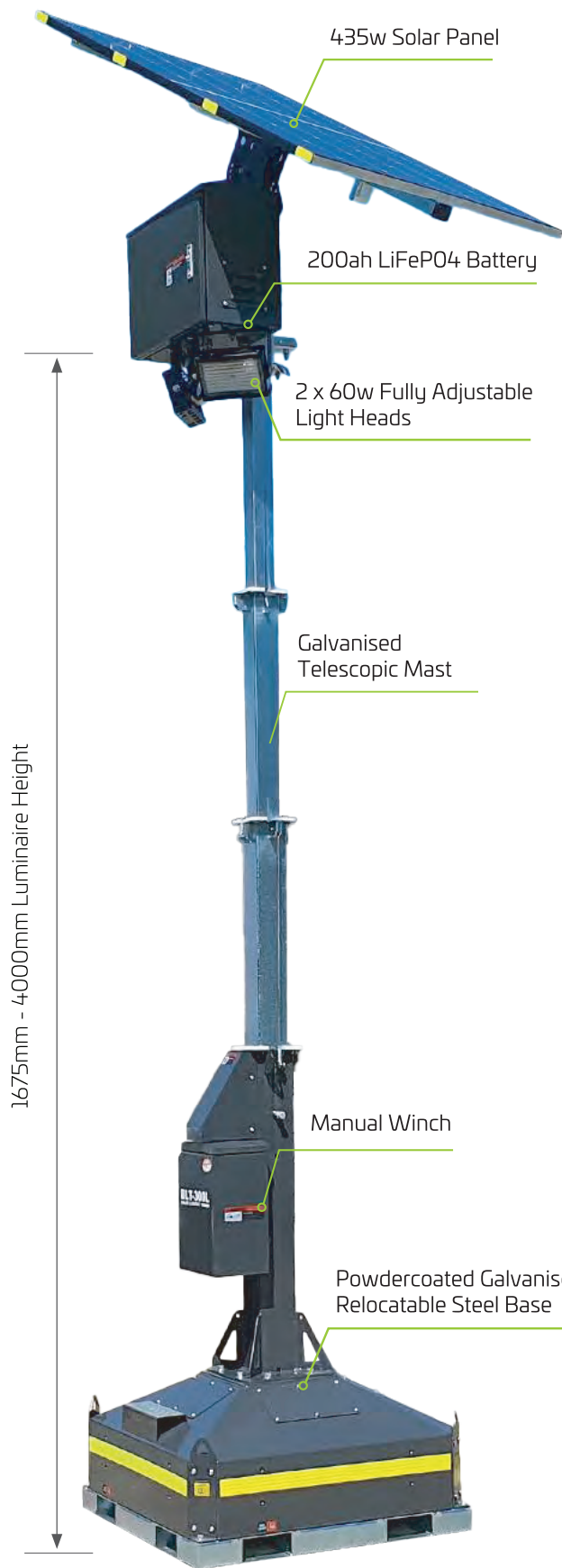
Inbuilt customisable smart programs

Adjustable light head and solar panel orientation and angle

Telescopic mast extends up to 4 metres high

2 year warranty for faulty workmanship or component failure not influenced by external means

SLD RELOCATABLE LIGHTING TOWER SPECIFICATION



Mode of Operation

The SLD Relocatable Lighting Tower features 4 smart programming modes.

- Manual on/off
- Automatic dusk on/dawn off
- Programmable lighting periods
- Programmable timer control

Please see the full instruction guide for in-depth explanations of the above modes.

Solar Panel Hinge Bracket 0°~90°

Lighting Control Interface

Manual Winch

Powdercoated Galvanised Relocatable Steel Base

4 x Lifting Points

4 x Forklift Pockets



2900mm Collapsed Height

As we continue to improve the products function and/or design specifications and data provided may change without notice. Errors and omissions accepted.

SLD RELOCATABLE LIGHTING TOWER SPECIFICATION

General Data

| | |
|------------------------------|----------------------|
| Dimensions (collapsed) | 1000 x 1000 x 2900mm |
| Dimensions (full extension) | 1800 x 1150 x 5175mm |
| Weight | 430kg |
| System Voltage | 12V |
| Wind Rating (full extension) | 80km |
| Warranty | 2 Years |
| SKU | MLT435 |

Lighting Data

| | |
|------------------------------|---------|
| LED Light Head | 2 x 60W |
| Lumen Output (25% Output) | 4800lm |
| Lumen Output (50% Output) | 9600lm |
| Lumen Output (75% Output) | 14400lm |
| Lumen Output (100% Output) | 19200lm |
| Correlated Colour Temp (CCT) | 5000K |
| Protection Class | IP65 |

Power Bank Data

| | |
|-------------------------------------|------------------------|
| Solar Panel Wattage | 435W |
| Solar Panel Mounting Angle | 0°~90° Manually Lifted |
| Recharge (100% output for 10 hours) | 4 Hours |
| Battery Type | LiFePO4 |
| Battery Specifications | 12.8V 200AH (2560Wh) |
| Lighting Time (25% Output) | 76.8 Hours |
| Lighting Time (50% Output) | 38.4 Hours |
| Lighting Time (75% Output) | 25.6 Hours |
| Lighting Time (100% Output) | 19.2 Hours |

240v Charger Data (Included)

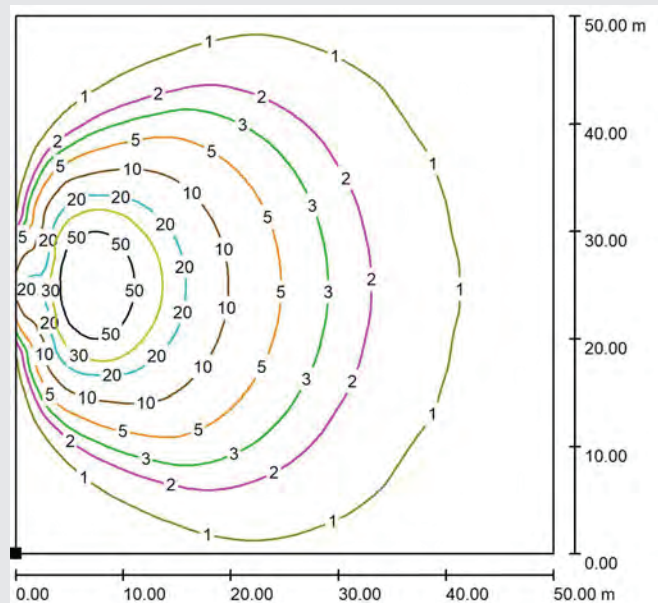
| | |
|---------------|--------------|
| Rated Power | 1.5kW/1.5kVa |
| Input Voltage | AC240V |
| Charger Time | 2.5 Hours |



Mast and Base Data

| | |
|-------------------------|-------------------------------|
| Mast Finish | Galvanised Steel |
| Fasteners | 304 Grade Stainless Steel |
| Wire Rope | 316 Grade Stainless Steel |
| Height (full extension) | 4m |
| Lifting method | Manual Winch |
| Base Finish | Powdercoated Galvanised Steel |
| Forklift Pockets | 4 |
| Lifting Points | 4 |

Dialux Data

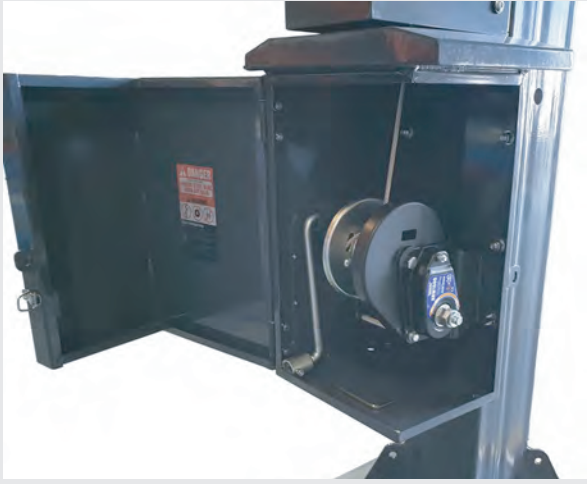


Lux, Scale 1 : 500

As we continue to improve the products function and/or design specifications and data provided may change without notice. Errors and omissions accepted.

SLD RELOCATABLE LIGHTING TOWER SPECIFICATION

Manual Lifting Winch



Solar Panel Adjustable Hinge



60w LED Light Head



Relocatable Steel Base



Battery and Control Box



System Control Panel



As we continue to improve the products function and/or design specifications and data provided may change without notice. Errors and omissions accepted.